

Key Vocabulary

leisure	Use of free time to do activities we enjoy.
Land use	How land is used for different reasons.
settlements	A place where people choose to live and build homes.
Population density	The number of living people living per square mile.
Co-ordinates	A group of numbers used to indicate the position of a location.
Grid reference	A location on a map, which is found using the northing and easting numbered lines.
key	A list of symbols that appear on a map.
Ordnance survey maps	The mapping agency for Great Britain that create up-to-date paper and digital maps.
Scale	Shows the size of the area shown on a map.
N/NE/E/SE/S/SW/W/NW	8 points on a compass that show direction.

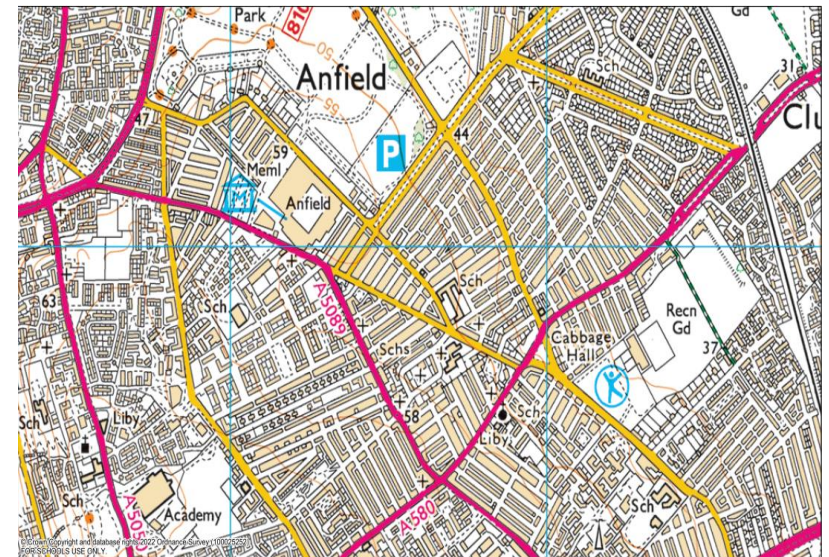
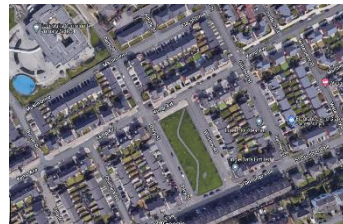
OS map symbols



Did you know?

There are more than eight primary schools within 1 mile of Four Oaks Primary School. That means lots of children who need places to play!

Year 3 - Do we need more play facilities in our local area?



- Know that Anfield has many different human and physical features, and that land is used for many different reasons.
- Know what leisure facilities are within the local Anfield area – and that there are not a lot of them.
- Know that Anfield is
- Know how to read symbols on OS maps to identify leisure facilities and other significant landmarks within the local area.
- Know that there are areas of Anfield with not a lot of space and others with a lot of open space.
- Know that there are some spaces that could be used to build more leisure and play facilities locally.
- Know how to identify and label/annotate these areas on OS maps and aerial views.